



FORMATION EVALUATION LOG



WELL : BASKER-3

FROM (m): 2500 TO (m): 3450 SCALE: 1/ 500

Country : AUSTRALIA	Latitude : 38°18'42.44"S	HOLE / CASING INFO 17 1/2" Hole to (mMDRT) : 1112m	Spud Date : 01-03-2006
Basin : GIPPSLAND	Longitude : 148°43'29.78"E	12 1/4" Hole to (mMDRT) : xxxx	Total Depth Date : xx-03-2006
Field : BASKER	UTM Co-ord X (m E) : 650106.2	13 3/8" Shoe at (mMDRT) : 1102.3m	Total Depth (mRT) : xxxxx
Permit : VIC/L26	UTM Co-ord Y (m N) : 5761989.6	9 5/8" Shoe at (mMDRT) : xxxx.xm	T.V.D. (mSS MSL) : xxxxx
Well Type : DEVELOPMENT	RT-LAT (m) : 21.5		Status : COMPLETED
Rig Name : OCEAN PATRIOT	RT-Seabed (m) : 174.4		

ABBREVIATIONS

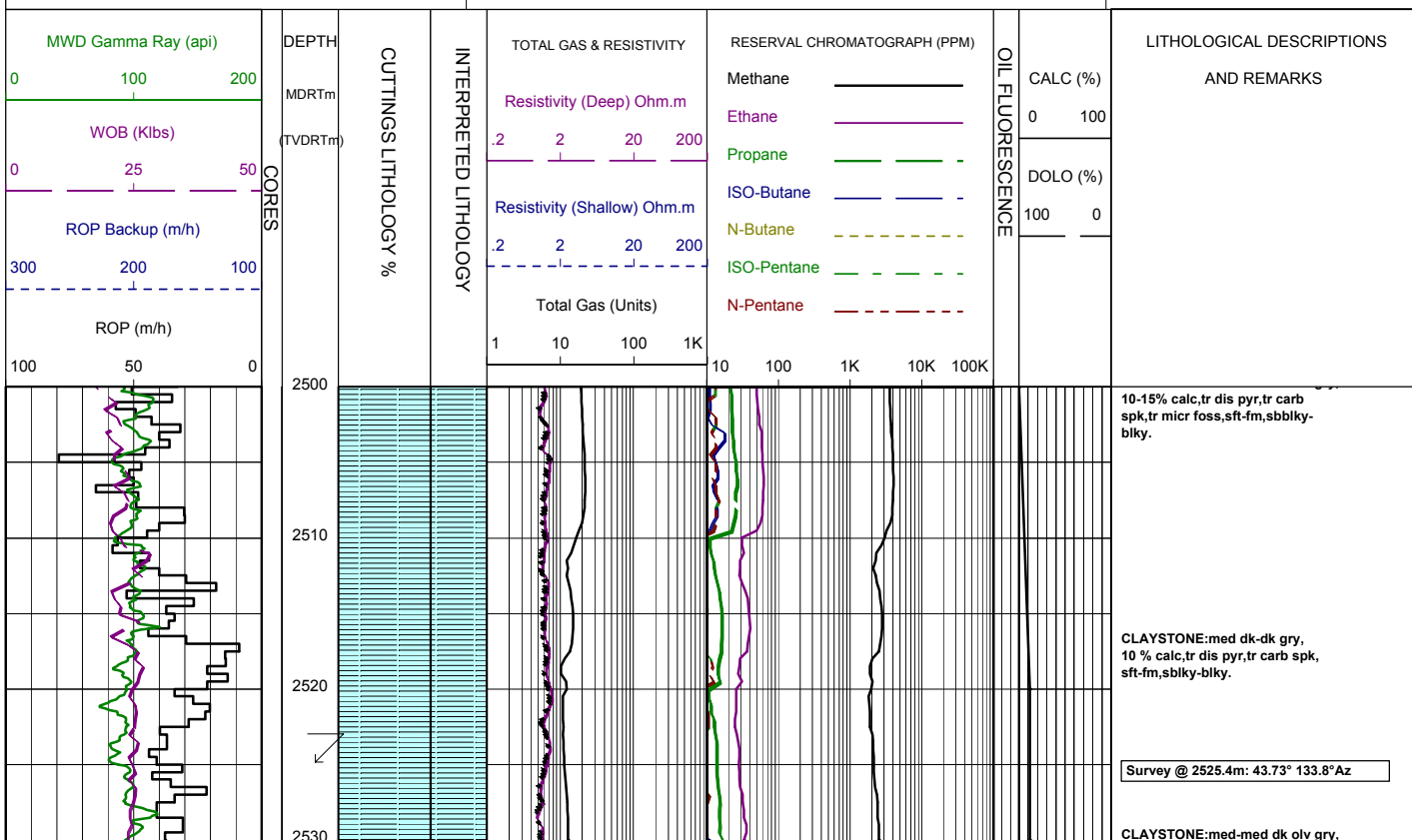
MW MUD WEIGHT	NB NEW BIT
FV FUNNEL VISCOSITY	RR RERUN BIT
PV PLASTIC VISCOSITY	CB CORE BIT
YP YIELD POINT	WOB WEIGHT ON BIT
FC FILTER CAKE	RPM REVS PER MINUTE
SOL SOLIDS	FLC FLOW CHECK
WL FILTRATE	CR CIRCULATE RETURNS
SD SAND - %	PR POOR RETURNS
S SALINITY - PPM	NR NO RETURNS
RM MUD RESISTIVITY	BG BACKGROUND GAS
RMF MUD FILTRATE	TG TRIP GAS
C CARBIDE TEST	STG SHORT TRIP GAS
LAT LOGGED AFTER TRIP	CG CONNECTION GAS
DS DEVIATION SURVEY	SG SWAB GAS
	SVG SURVEY GAS

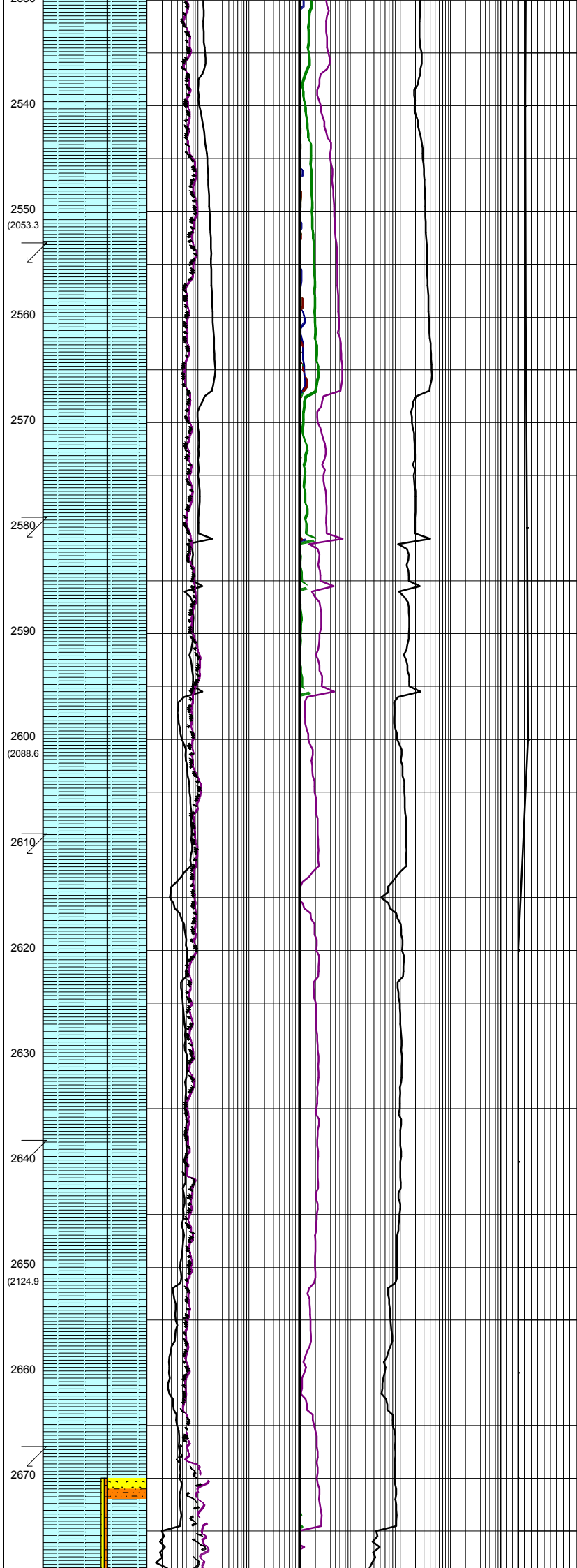
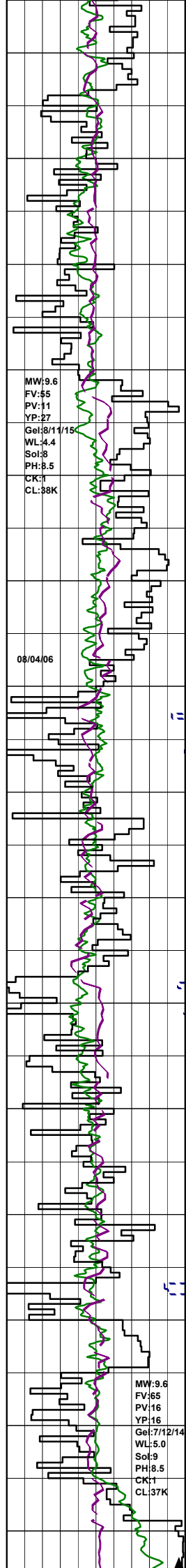
LITHOLOGY LEGEND

	Claystone		Limestone		Brachiopoda
	Siltstone		Dolomite		Cement
	ar. Silt ar		Coal		Sponges
	Fine SST		Gypsum		Glauconite
	Medium SST		Lithic Fragment		Pyrite
	Coarse SST		Foraminifera		Iron Minerals
	Marl		Fossils		Mica
	Clay, Limestone		Bryozoa		Carb Fragments

ENGINEERING LEGEND

	Shoe		FIT
	Mud loss		Mud gain
	Deviation survey		
	DST		
	Test		
	Sidewall Core		
	Core		
	RFT		





10% calc, tr dis pyr, tr carb spk, sft-fm, sbbiky-blky.

CLAYSTONE: med-med dk-dk gry, 10% calc, tr carb spk, tr micr foss, sft-fm, sbbiky-blky.

Survey @ 2554.2m: 45.66° 132.6° Az

CLAYSTONE: med gry-med dk gry, olv gry, 10% calc, tr pyr, tr carb spk, slty i/p, tr sft-mod hd, sbbiky-blky.

Survey @ 2582.8m: 45.26° 131.2° Az

CLAYSTONE: med gry-med dk gry, olv gry, 10% calc, tr glauc, tr carb spk, slty i/p, tr vf qtz grn, sft-mod hd, sbbiky-blky.

Survey @ 2611.4m: 44.15° 132.1° Az

CLAYSTONE: med gry-med dk gry, olv gry, 10% calc, tr pyr, tr carb spk, tr glauc, slty i/p, tr vf qtz grn, sft-fm, occ mod hd, sbbiky-blky.

CLAYSTONE: med gry-med dk gry, olv gry, 10% calc, tr pyr, tr carb spk, tr glauc, slty i/p, tr vf qtz grn, sft-fm, occ mod hd, sbbiky-blky.

Survey @ 2639.9m: 42.7° 131.1° Az

CLAYSTONE: med gry-med dk gry, olv gry, 10% calc, tr pyr, tr carb spk, tr glauc, slty i/p, tr vf qtz grn, sft-fm, occ mod hd, sbbiky-blky.

Survey @ 2668.2m: 41.76° 131.9° Az

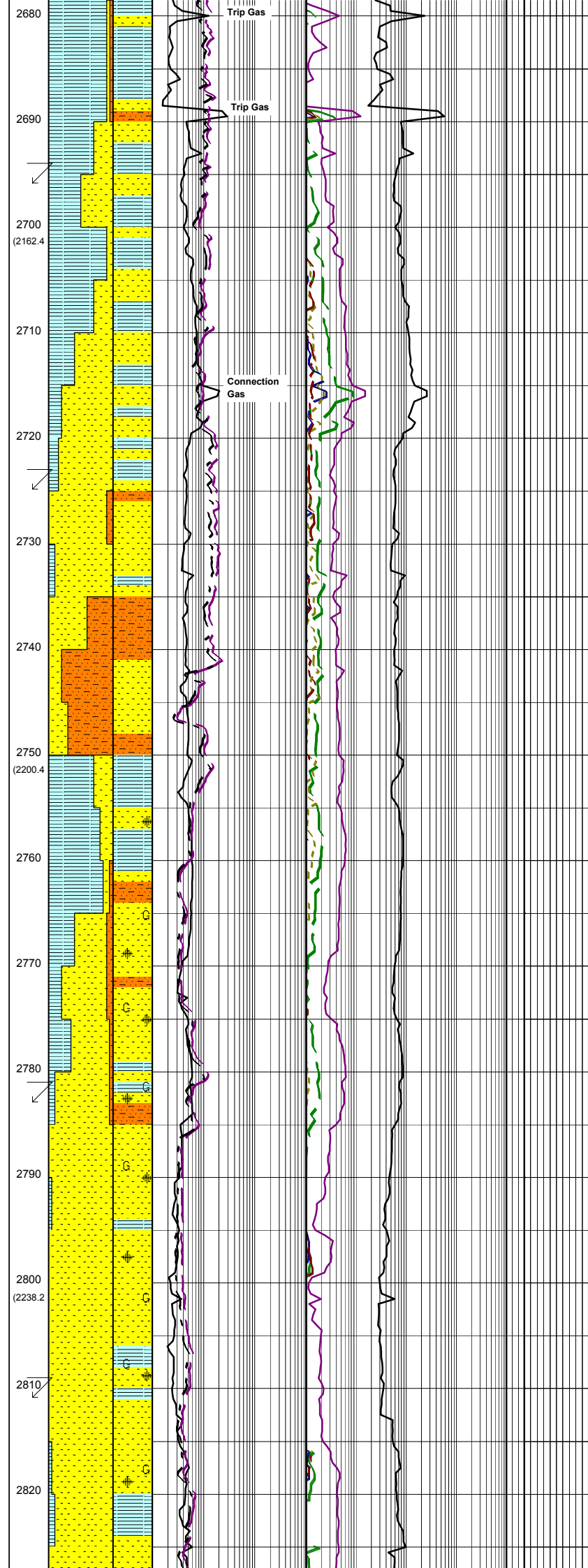
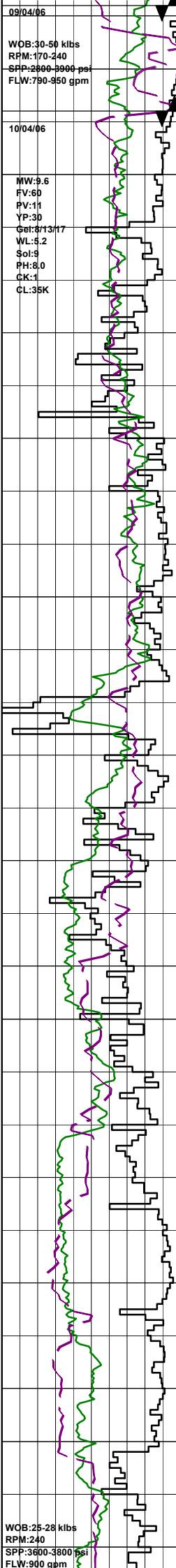
SANDSTONE: cir, trnsl, yelsh brn, org, f-med grn, rr crs, pr srt, sbang-sbrnd, tr 5% glauc, pr-mod inf por, tr foss, no fluor.

SILTSTONE: brnsh gry, mott grn, yelsh grn, sft-fm, blocky, 10% arg, tr f pyr, tr f carb, com glauc to 40% by volume.

09/04/06
 WOB:30-50 klbs
 RPM:170-240
 SPP:2600-3900 psi
 FLW:790-950 gpm

10/04/06
 MW:9.6
 FV:60
 PV:11
 YP:30
 Gel:8/13/17
 WL:5.2
 Sol:9
 PH:8.0
 CK:1
 CL:35K

WOB:25-28 klbs
 RPM:240
 SPP:3600-3800 psi
 FLW:900 gpm



CLAYSTONE:(sample from balled bit),dk grn/gry,grnsh blk,amor,sft, plstc, stky and deformable,f sand i/p,occ %5 silt.

BIT #4: REED DSX813M
 SIZE:311mm 12.25"
 JETS: 8x16
 IN:2679m OUT:2689m
 RUN:10m HRS:5.4
 COND:1-1-PN-T-X-I-CT-PP

BIT #5: SMITH GFS10B
 SIZE:311mm 12.25"
 JETS: 3x24,1x19
 IN:2689m OUT:2969m
 RUN:280 HRS:29.0
 COND:4-5-WT-A-E-1-ER-PR

Survey @ 2696.5m: 40.24° 131.3°Az

SANDSTONE:clr,trnsl,pl grn,yelsh brn,vf-med grn,rr crs,pr srt,sbang-sbrnd,tr 10% glauc,fa-g inf por,ise, no fluor.

CLAYSTONE:med-dk gry,occ dk gry, grnsh gry,lt olv gry,sl calc,slty, tr 10% glauc,tr carb spk,fm-mod hd, sft i/p,sbbiky-blky.

Survey @ 2725.8m: 40.40° 131.7°Az

SANDSTONE:clr,trnsl,pl grn,yelsh brn,vf-med grn,rr crs,pr srt,sbang-sbrnd,tr 10% glauc,fa-g inf por,ise, no fluor.

SILTSTONE:brnsh gry,pl gm, yelsh brn,com arg,grd to Arg Siltst, tr 20% glauc,sft-fm,sbbiky-blky.

SANDSTONE:clr,trnsl,off wh,f-vcrs grn,pr-mod srt,sbang-sbrnd,tr glauc,pr inf por, no fluor.

CLAYSTONE:med-med dk gry,olv gry,try pyr,tr glauc,slty i/p sft-mod,sbbiky-amor.

SANDSTONE:clr-trnsl,wh,f-vcrs grn, pr-mod srt,,sbang-sbrnd,tr carb spk, pr-med inf por,no fluor.

CLAYSTONE:med dk-olv gry, tr glauc,tr pyr,tr carb spks, sft-mod,sbbiky-amor.

SANDSTONE:clr-trnsl,ormg-wh, occ lt grn,vf-crs grn,mod srt,sbang-sbrnd,tr glauc,tr carb spk,fr vis por, pr inf por,no fluor.

Survey @ 2782.9m: 41.37° 130.4°Az

CLAYSTONE:med-drk gry, silt i/p,tr glauc,vsft-mod, sbbiky-amor.

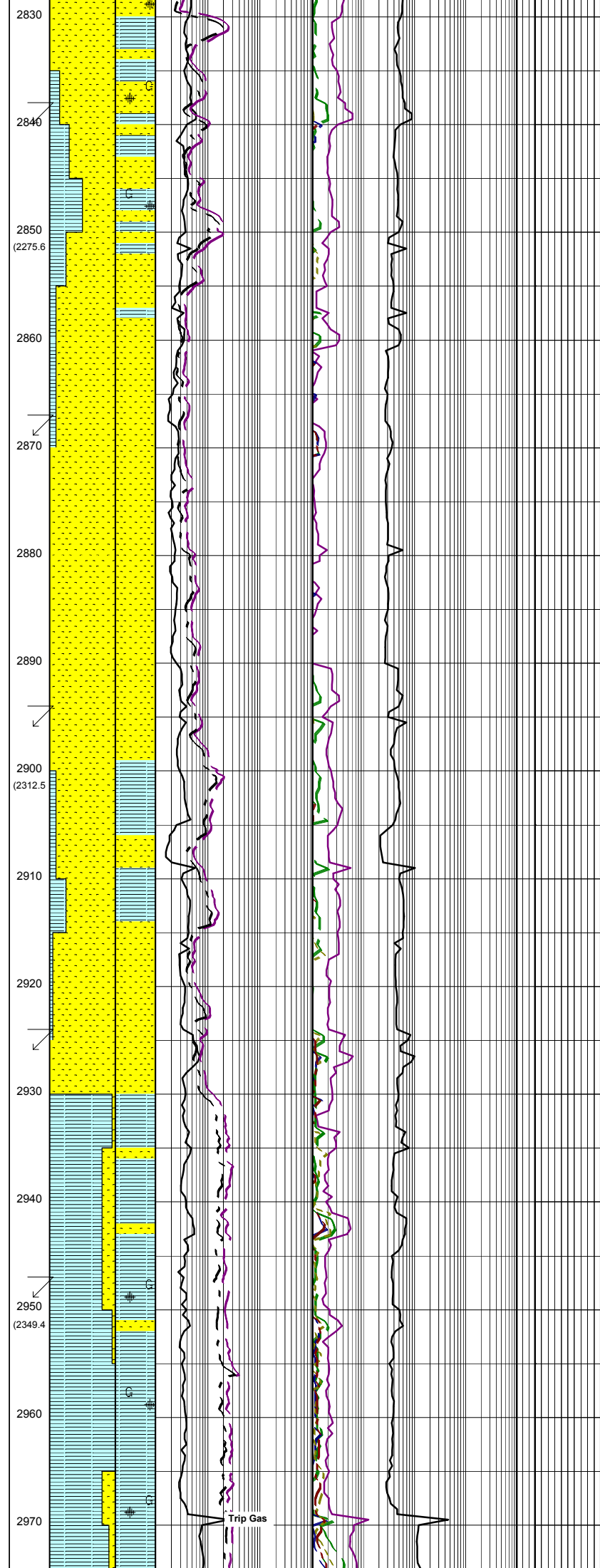
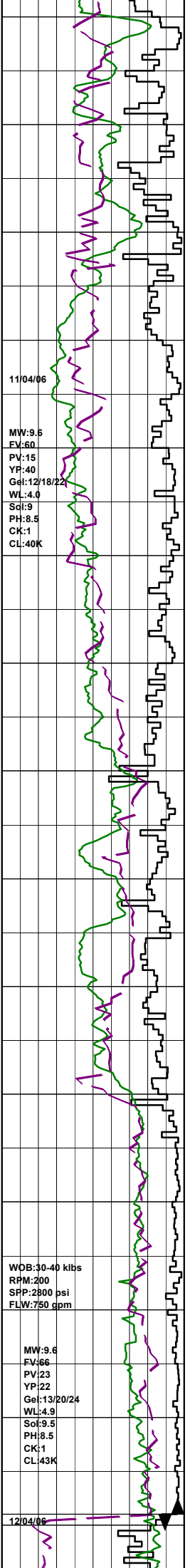
SANDSTONE:trnsl-clr,occ lt grn,vf- crs grn,mod-wl srt,sbang-sbrnd,tr glauc,tr carb spk,tr pyr, fr-gd inf por,no fluor.

SANDSTONE:clr-trnsl,occ lt grn, vf-vcrs i/p,mod-wl srt,sbang-sbrnd,tr glauc,tr carb spk,tr pyr,gd inf por,no fluor.

Survey @ 2811.2m: 41.37° 130.4°Az

SANDSTONE:wh,clr,trnsl,occ lt grn,f-vcrs grn,mod-wl srt,sbang-sbrnd,tr glauc,tr carb spk,tr pyr, fr inf por,no fluor.

CLAYSTONE:med-med dk gry, olv gry,silty i/p,tr glauc, 5% calc,sft-mod, sbbiky.



SANDSTONE:clr-trnsl,occ lt grn, f-crs i/p,mod-wl srt,sbang-sbrnd,tr glauc,tr carb spk,tr pyr cmt,pr vis por,fr inf por,no fluor.

Survey @ 2840.1m: 41.98° 129.1°Az

CLAYSTONE:med dk-olv gry,tr silty i/p,tr glauc,v sft-fm, sbbiky-amor.

SANDSTONE:wh,clr,trnsl,occ lt grn,f-crs,pr-mod srt,sbang-sbrnd,tr glauc,tr pyr,tr carb spk, lse,silty i/p, pr-fr inf por,no fluor.

SANDSTONE:clr,trnsl,wh,occ lt grn,f-crs grn,dom crs,pr-mod srt, sbang-sbrnd,tr glauc,tr carb spk, lse,silty i/p,g inf por,no fluor.

Survey @ 2868.8m: 42.24° 129.6°Az

SANDSTONE:clr,trnsl,wh,occ lt grn,f-crs grn,dom crs,pr-mod srt, sbang-sbrnd,tr glauc,tr carb spk, tr pyr,lse,silty i/p,g inf por,no fluor.

SANDSTONE:clr,trnsl,wh,f-med grn,com crs,pr-mod srt,sbang-sbrnd, tr glauc,tr carb spk,tr pyr, tr foss, lse,silty i/p,g inf por,no fluor.

SANDSTONE:clr,trnsl,wh,yelsh brn, f-med grn,com crs,pr-mod srt,sbang-sbrnd,tr glauc,tr carb spk,tr pyr, lse,silty i/p,g inf por,no fluor.

Survey @ 2896.9m: 42.68° 129.5°Az

SILTY CLAYSTONE:dk gry,grn,tr glauc,cly i/p,sft-disp.sbbiky-amor.

SILTY CLAYSTONE:dk gry,grn,tr glauc,cly i/p,sft-disp.sbbiky-amor.

SANDSTONE:clr,trnsl,wh,yelsh brn, pl grn,f-med grn,rr crs,pr-mod srt, sbang-sbrnd,tr glauc,tr carb spk, tr pyr,calc,lse,silty i/p,g inf por, no fluor.

Survey @ 2926.1m: 43.01° 129.9°Az

SANDSTONE:clr,trnsl,wh,yelsh brn, pl grn,f-med grn,rr crs,pr-mod srt, sbang-sbrnd,tr glauc,tr carb spk, tr pyr,lse,silty i/p,g inf por, no fluor.

SILTY CLAYSTONE:med dk-dk gry,lt brn-olv gry,5% carb,tr pyr,tr carb spk,vsft-mod hd,sbbiky-amor.

Survey @ 2948.4m: 41.69° 129.6°Az

SILTY CLAYSTONE:med-drk gry, olv gry,tr glauc,tr carb spk,vsft-mod hd,sbbiky-amor.

BIT #3RR2:Hycalog RSX616M-A9
 SIZE: 311mm 12.25"
 JETS: 4x18,2x20
 IN: 2969m OUT:3282m
 RUN: 313m HRS:32.2
 COND:7-7-RO-S-X-I-BT-PR

SILTY CLAYSTONE: med-med dk gry, drk gry, tr glauc, tr pyr, tr carb spk, vsft-fm, sbblky-amor.

Survey @ 2984.5m: 39.88° 129.3°Az

SANDSTONE: trnsi-clr, occ org, occ grn, vf-med, occ crs, mod-wl srt, sbang-sbrnd, tr glauc, lse, fr inf por, no fluor.

SILTY CLAYSTONE: drk grnsh gry med drk gry, occ tan-drk brn, tr glauc, tr pyr, mod-fm, sbblky-blky.

Survey @ 3011.5m: 39.38° 129.4°Az

SILTSTONE: tn-dk brn, tr glauc, sft, sbblky.

CLAYSTONE: med dk gry-olv gry, tr glauc, tr pyr, sft-fm, sbblky-amor.

SANDSTONE: wh-clr, yel-trnsi, f-med, occ crs, mod srt, tr glauc, tr pyr, tr carb spk, lse, fr inf por, no fluor.

Survey @ 3041.1m: 38.31° 129.4°Az

SILTSTONE: drk-olv gry, tan lbrn-brn gry, sil i/p, cly i/p, tr glauc, tr pyr, tr carb spk, tr micmic, occ f snd grs., sft-fri, sbblky-blky.

SANDSTONE: wh, trnsi-clr, vf-med, occ crs, mod wl srt, sbang-sbrnd, tr pyr, tr glauc, lse, fr inf por, no fluor.

Survey @ 3069.8m: 37.19° 129.8°Az

ARGILLACEOUS SILTSTONE: med-drk gry, tr glauc, sft-fm, sbblky-amor.

SILTSTONE: mott wh-drk brn, tr glauc, tr pyr, fm, sbblky-blky.

CLAYSTONE: med-med drk gry, drk gn gry, glauc, silty i/p, tr carb spk, vsft, occ fm, amor, occ sbblky.

Survey @ 3099.1m: 35.76° 130.7°Az

CLAYSTONE: med-med drk gry, drk gn gry, glauc, silty i/p, tr carb spk, tr pyr, occ f snd, vsft, occ fm, amor, occ sbblky.

SANDSTONE: clr, trnsi, wh, pl gm, dk gry, vf-med grn, tr crs, sbang-sbrnd, mod srt, tr pyr cmt w/ glauc, tr carb spk, sty i/p, lse, gd inf por, no fluor.

COAL: blk, brn blk, dll-ea, brit, tr frm, sbblky, ang-uneven.

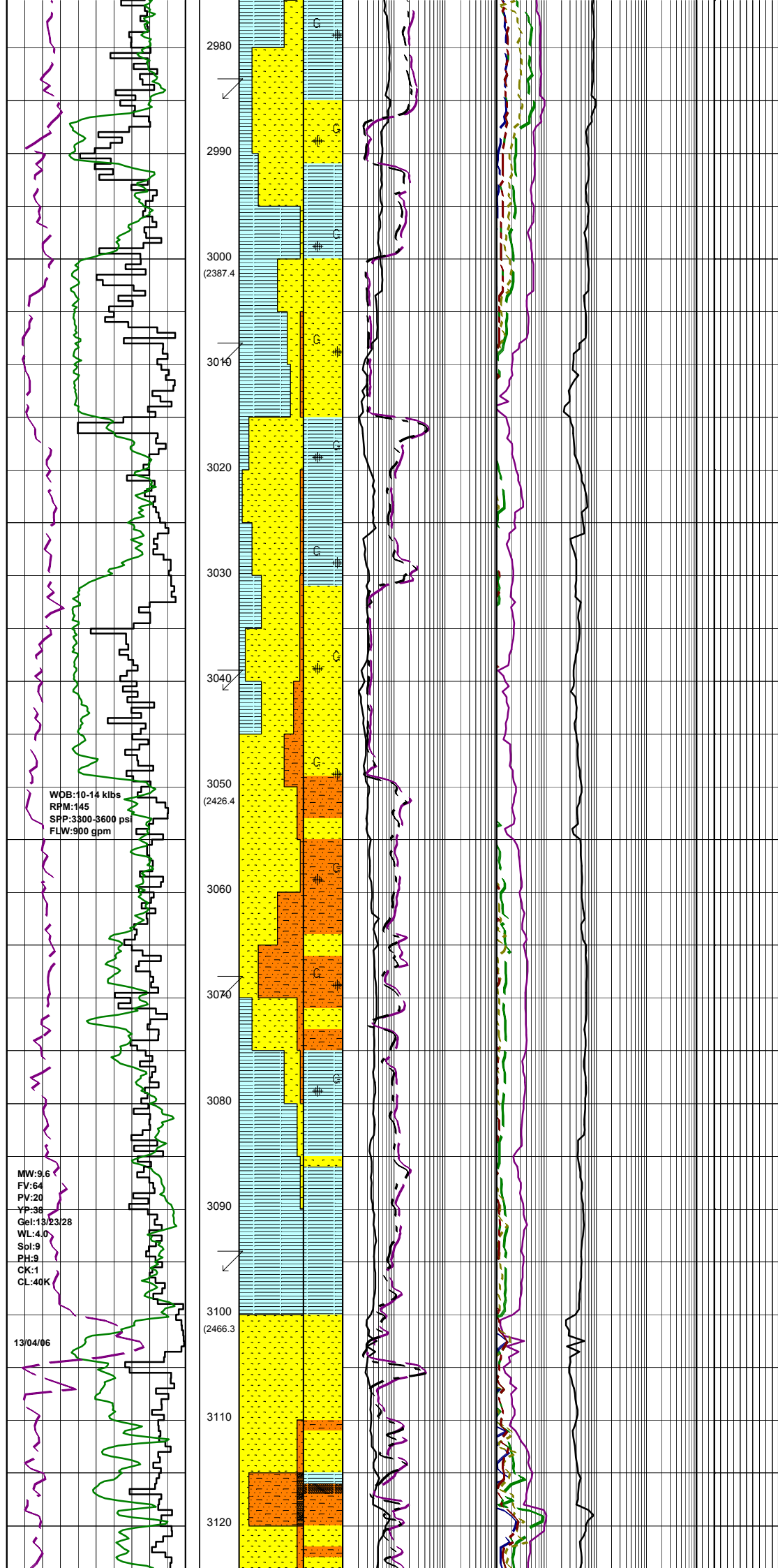
SANDSTONE: clr, trnsi, wh, pl gm, dk gry, vf-med grn, com crs, sbang-sbrnd, mod srt, tr pyr cmt w/ glauc, tr carb spk, sty i/p, lse, gd inf por, no fluor.

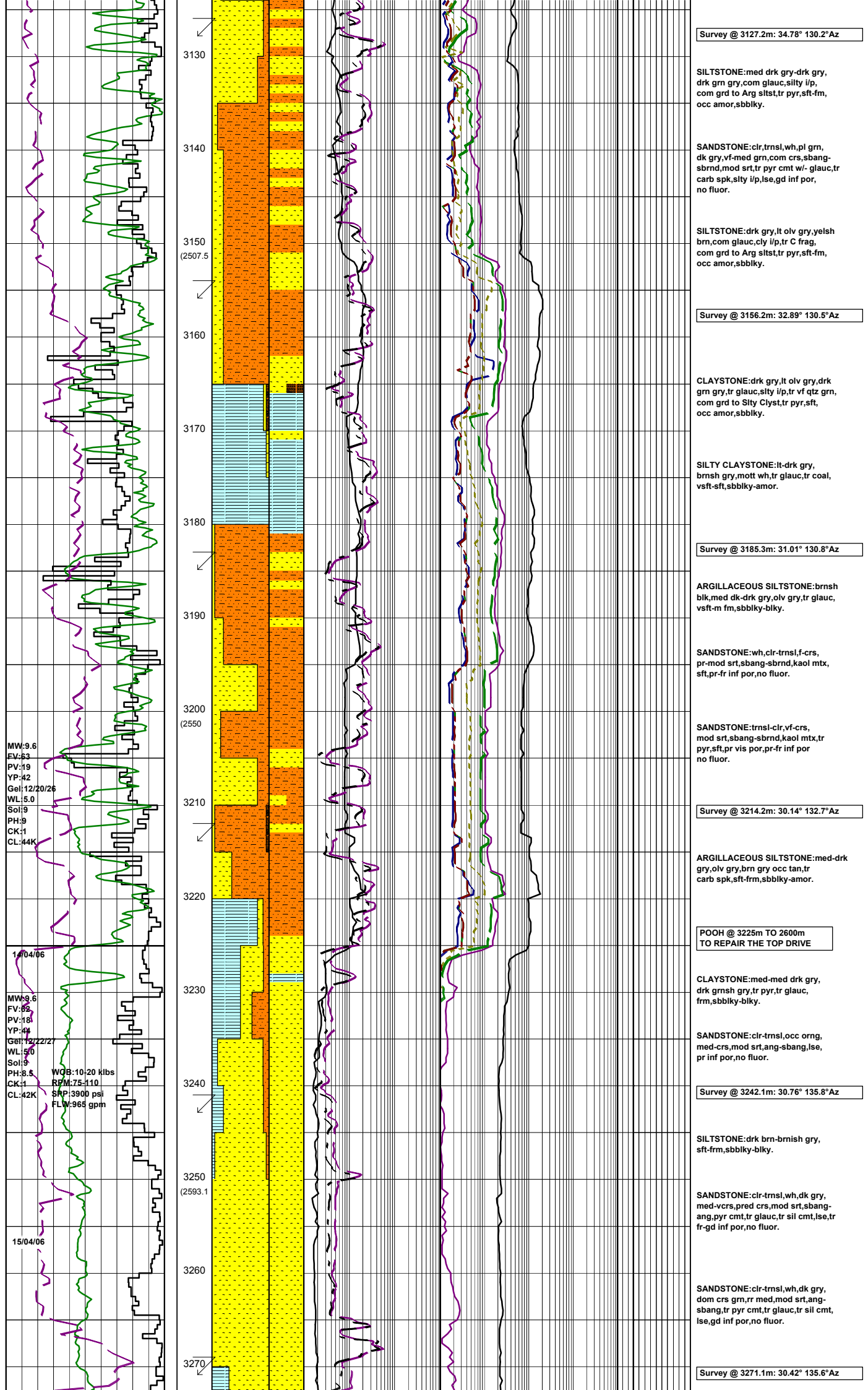
2980
2990
3000 (2387.4)
3010
3020
3030
3040
3050 (2426.4)
3060
3070
3080
3090
3100 (2466.3)
3110
3120

WOB: 10-14 kilts
RPM: 145
SFP: 3300-3600 psi
FLW: 900 gpm

MW: 9.6
FV: 64
PV: 20
YP: 36
Gel: 19/23/28
WL: 4.0
SpI: 9
PH: 9
CK: 1
CL: 40K

13/04/06





Survey @ 3127.2m: 34.78° 130.2°Az

SILTSTONE: med drk gry-drk gry, drk grn gry, com glauc, silty i/p, com grd to Arg sltst, tr pyr, sft-fm, occ amor, sbbiky.

SANDSTONE: clr, trnsl, wh, pl grn, dk gry, vf-med grn, com crs, sbang-sbrnd, mod srt, tr pyr cmt w/ glauc, tr carb spk, silty i/p, lse, gd inf por, no fluor.

SILTSTONE: drk gry, lt olv gry, yelsh brn, com glauc, cly i/p, tr C frag, com grd to Arg sltst, tr pyr, sft-fm, occ amor, sbbiky.

Survey @ 3156.2m: 32.89° 130.5°Az

CLAYSTONE: drk gry, lt olv gry, drk grn gry, tr glauc, silty i/p, tr vf qtz grn, com grd to Silty Clyst, tr pyr, sft, occ amor, sbbiky.

SILTY CLAYSTONE: lt-drk gry, brnsh gry, mott wh, tr glauc, tr coal, vsft-sft, sbbiky-amor.

Survey @ 3185.3m: 31.01° 130.8°Az

ARGILLACEOUS SILTSTONE: brnsh blk, med dk-drk gry, olv gry, tr glauc, vsft-m fm, sbbiky-blky.

SANDSTONE: wh, clr-trnsl, f-crs, pr-mod srt, sbang-sbrnd, kaol mtz, sft, pr-fr inf por, no fluor.

SANDSTONE: trnsl-clr, vf-crs, mod srt, sbang-sbrnd, kaol mtz, tr pyr, sft, pr vis por, pr-fr inf por no fluor.

Survey @ 3214.2m: 30.14° 132.7°Az

ARGILLACEOUS SILTSTONE: med-drk gry, olv gry, brn gry, occ tan, tr carb spk, sft-fm, sbbiky-amor.

POOH @ 3225m TO 2600m TO REPAIR THE TOP DRIVE

CLAYSTONE: med-med drk gry, drk grnsh gry, tr pyr, tr glauc, frm, sbbiky-blky.

SANDSTONE: clr-trnsl, occ orng, med-crs, mod srt, ang-sbang, lse, pr inf por, no fluor.

Survey @ 3242.1m: 30.76° 135.8°Az

SILTSTONE: drk brn-brnsh gry, sft-fm, sbbiky-blky.

SANDSTONE: clr-trnsl, wh, dk gry, med-vcrs, pred crs, mod srt, sbang-ang, pyr cmt, tr glauc, tr sil cmt, lse, tr fr-gd inf por, no fluor.

SANDSTONE: clr-trnsl, wh, dk gry, dom crs grn, r med, mod srt, ang-sbang, tr pyr cmt, tr glauc, tr sil cmt, lse, gd inf por, no fluor.

Survey @ 3271.1m: 30.42° 135.6°Az

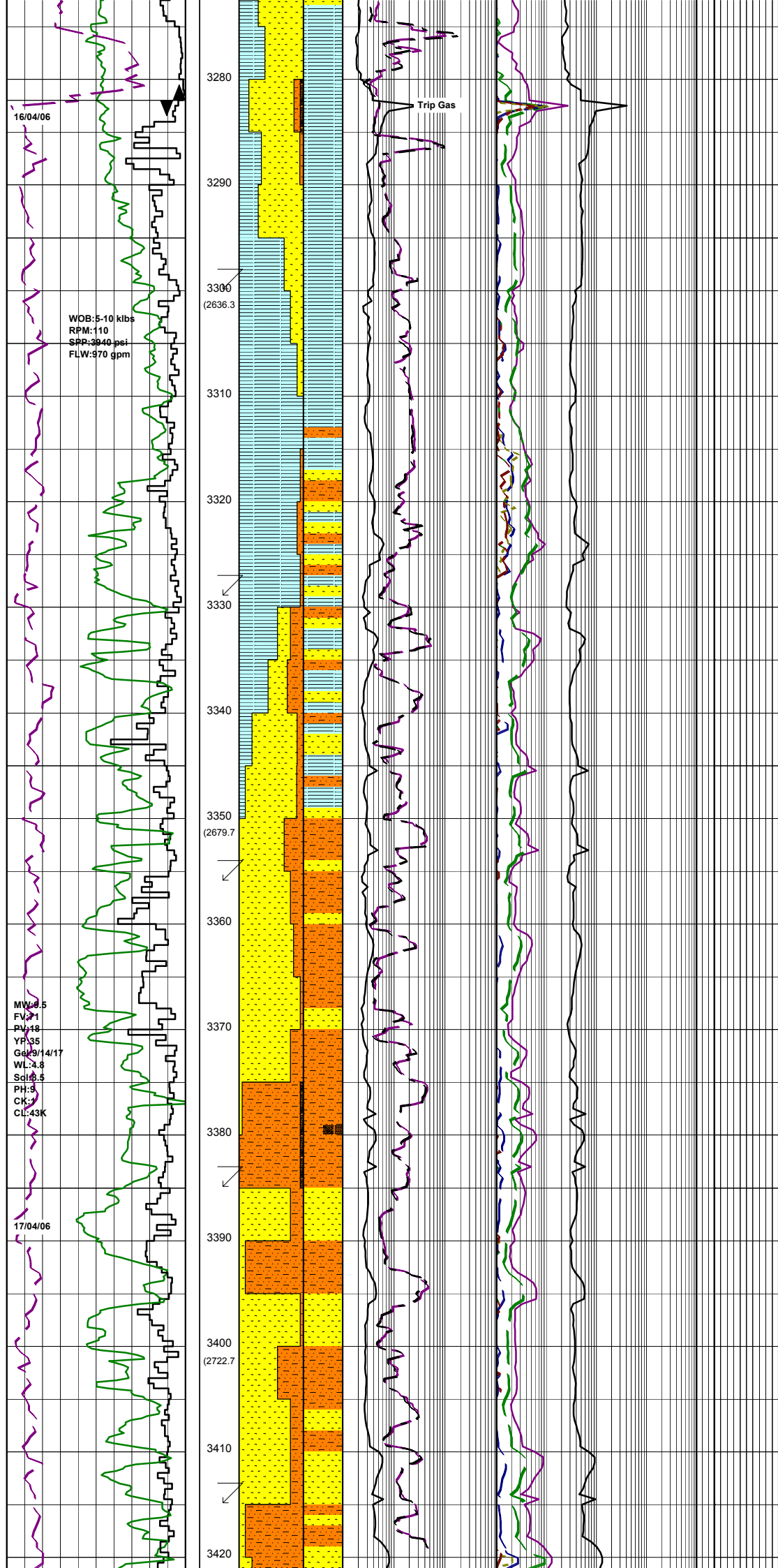
MW: 9.6
 EV: 53
 PV: 19
 YP: 42
 Gel: 12/20/26
 WL: 5.0
 Sol: 9
 PH: 9
 CK: 1
 CL: 44K

1/10/06

MW: 9.6
 FW: 82
 PV: 18
 YP: 44
 Gel: 12/22/27
 WL: 5.0
 Sol: 9
 PH: 8.5
 CK: 1
 CL: 42K

WOB: 10-20 klbs
 RPM: 75-110
 SRP: 3900 psi
 FLW: 965 gpm

15/04/06



CLAYSTONE: oiv gry, dk gry, grnsh gry, tr calc, tr glauc, silty i/p, tr carb spk, frm-hd, rr vhd, sbbly-blyk, tr splty.

BIT #6: Hycalog RSX616M-A9
 SIZE: 311mm 12.25"
 JETS: 4x18, 2x20
 IN: 3282m OUT: XXXXm
 RUN: xxm HRS: XX.X
 COND:

SANDSTONE: clr-trnsl, occ grn, f-med, wl srt, sbang-sbrnd, tr glauc, tr pyr, tr mic foss, lse, fr inf por, no fluor.

Survey @ 3299.9m: 29.99° 135.23° Az

CLAYSTONE: med dk-dk gry, calc, tr glauc, tr carb spk, silty i/p, sft-frm, sbbly-blyk.

SILTY CLAYSTONE: lt-med dk gry, drk gry, calc, tr glauc, tr carb spk, vsft-frm, sbbly-amor.

SILTSTONE: brn-dk brn, tr glauc, tr sand, sft, sbbly.

SILTY CLAYSTONE: med-med dk gry, mott lt gry, calc, tr glauc, tr micmic, vsft-frm, sbbly-amor.

Survey @ 3328.7m: 29.86° 137.4° Az

CLAYSTONE: lt gry-drk gry, tr pry, tr micmic, tr glauc, tr carb spk vsft-frm, calc, sbbly-amor.

SANDSTONE: trnsl-clr, f-med occ crs, wl srt, sbang-sbrnd, lse, fr inf por, no fluor.

SILTSTONE: Brn-dk brn, occ tan, tr coal, tr pr, sft-frm, sbfiss-sbblyk.

Survey @ 3356.8m: 30.16° 137.4° Az

ARGILLACEOUS SILTSTONE: med-dk gry, brn-brnsh blk, ty pyr, tr glauc, vsft-frm, sbbly-blyk.

SANDSTONE: trnsl-clr, f-crs, occ vcrs, sbang-sbrnd, kaol mtx, sft, tr carb spk, pr-fr vis por, pr-fr inf por, no fluor.

ARGILLACEOUS SILTSTONE: lt-med gry, brn-brnsh blk, ty pyr, tr glauc, vsft-frm, sbbly-amor.

Survey @ 3385.4m: 29.85° 137.9° Az

SANDSTONE: trnsl-clr, wh, yel, f-crs, occ vcrs, sbang-sbrnd, kaol mtx, sft, tr carb spk, gd inf por, no fluor.

ARGILLACEOUS SILTSTONE: lt-med gry, gm gry, brnsh blk, tr pyr, tr glauc, tr carb spk, vsft-frm, sbbly-amor.

SANDSTONE: trnsl-clr, wh, yel, f-crs, occ vcrs, sbang-sbrnd, sft, tr carb spk, gd inf por, no fluor.

Survey @ 3414.8m: 30.40° 138.0° Az

ARGILLACEOUS SILTSTONE: lt-med

16/04/06

WOB: 5-10 klbs
 RPM: 110
 SPP: 3940 psi
 FLW: 970 gpm

MW: 8.5
 FV: 7.1
 PV: 4.8
 YP: 35
 Gd: 9/14/17
 WL: 4.8
 Sol: 8.5
 PH: 3
 CK: 3
 CL: 43K

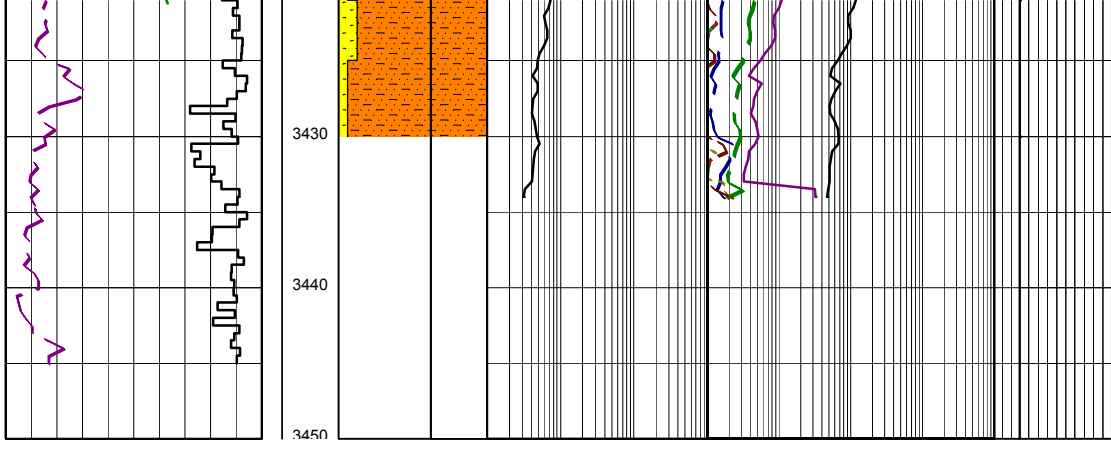
17/04/06

Trip Gas

MW: 8.5
 FV: 7.1
 PV: 4.8
 YP: 35
 Gd: 9/14/17
 WL: 4.8
 Sol: 8.5
 PH: 3
 CK: 3
 CL: 43K

17/04/06

17/04/06



gry,grn gry,brnsh blk,tr pyr,tr glauc,
tr carb spk,vsft-fm,sbbiky-amor.